

NEW CALEDONIA MADE EASY:

GLP HOTELS

12 JUNE 2025





YOUR HOSTS TODAY



Julie CASSIN
Sales Manager GLP Hotels

sales@glphotels.nc



Rebecca MARCHAL
NCT Representative AU

r.marchal@nctourisme.com

An aerial photograph of a tropical resort. The top half shows a series of overwater bungalows with thatched roofs connected by a wooden walkway, extending into clear turquoise water. The bottom half shows a large swimming pool with lounge chairs and palm trees. A central text box with a white border contains the words "CURRENT SITUATION" in large, white, bold, sans-serif capital letters.

CURRENT SITUATION

GENERAL UPDATE ON THE SITUATION

smartraveller
.gov.au

- **No stigma** of what happened.
- **Everyday life back to normal** - Calm has been restored, normal life has resumed
- **Accommodation, transport and activities are fully operating**
- **Return of cruises to Lifou** since 18 October and **to Nouméa** since 10 November.
- **DFAT** (Australian government) lowered travel advice on 14 January 2025





NEW - NZ UPDATE

- **MFAT** (New Zealand government) : lowered travel advice on 5 May 2025
- Air New Zealand resume direct flights AUCKLAND – NOUMEA from 1st November 2025!





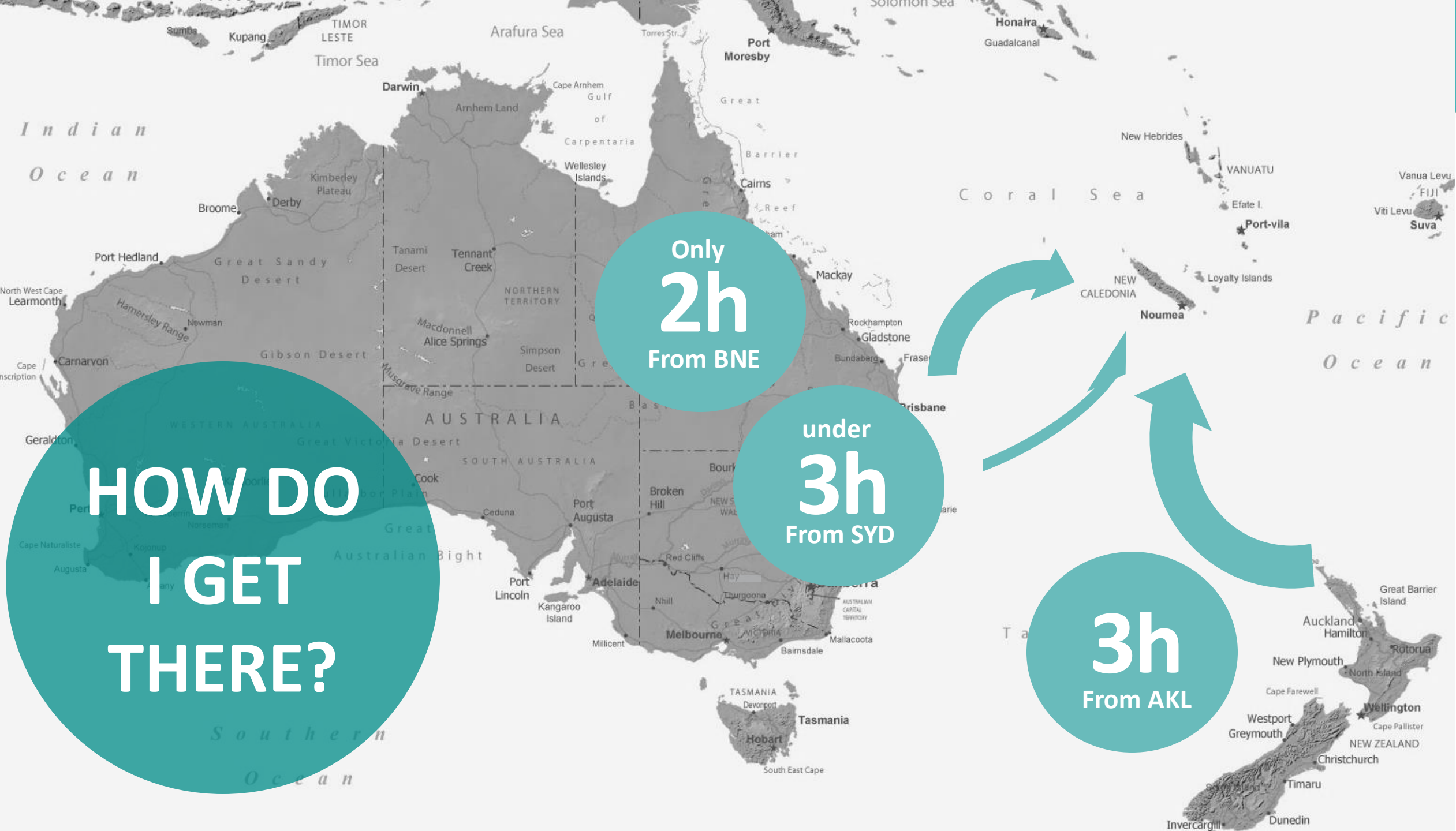
FLIGHT SCHEDULE 2025*

*Subject to change



	QANTAS	AIRCALIN	AIR NZ
BNE-NOU-BNE	3x per week TUE, THU, SAT	3x per week WED, SUN, FRI**	
SYD-NOU-SYD	3x per week WED, SAT, SUN	3x per week TUE, FRI, SAT**	
AKL-NOU-AKL		2x per week THU, SUN	1x per week From 1st Nov SAT

**Seasonal



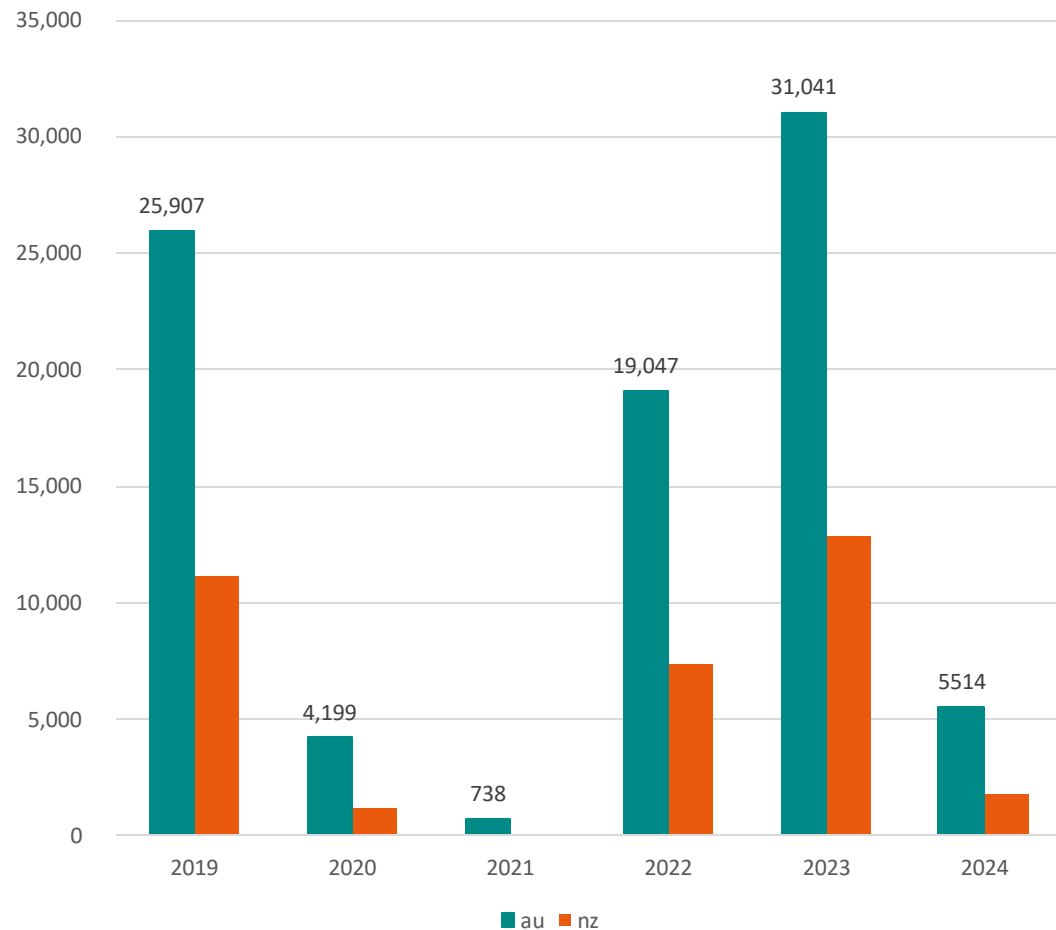
HOW DO
I GET
THERE?

Only
2h
From BNE

under
3h
From SYD

3h
From AKL

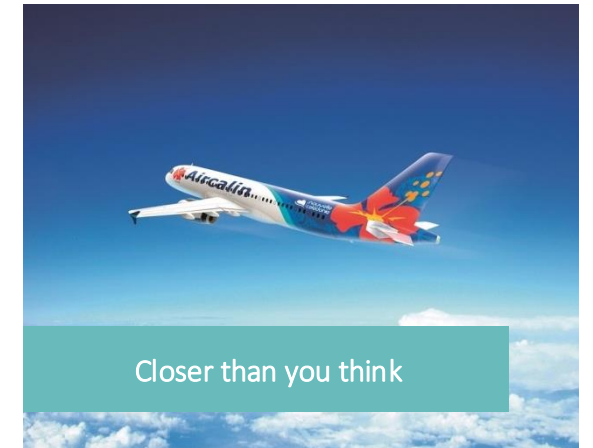
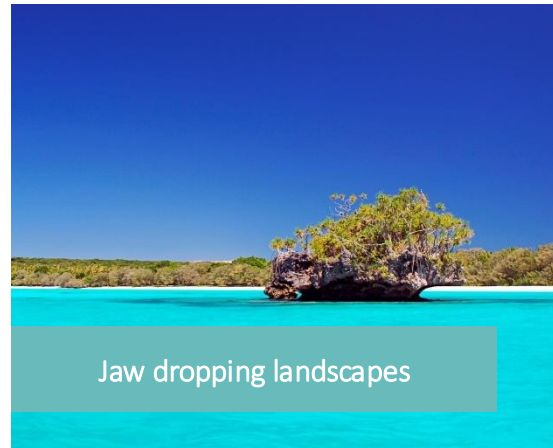
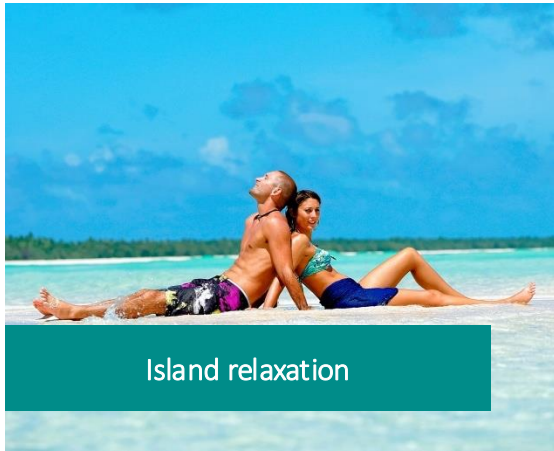
A RECORD 2023 FOR THE AU/NZ MARKET



- AU and NZ are respectively the 2nd and 3rd market
- Since 2015, number of AU visitors has increased by **48 %** and NZ visitors by **51%**
- Increase of **18.5%** of AU visitors and **14.5%** of NZ visitors 2023 vs 2019
- From January to March 2024, the number of visitors from these two markets remained steady compared to 2023.



Why New Caledonia should be on your clients travel list in 2025





They experienced it, this is what they say

“A phenomenal blend of beautiful food, picturesque scenery and the warmest people!” Todd | Flight Centre

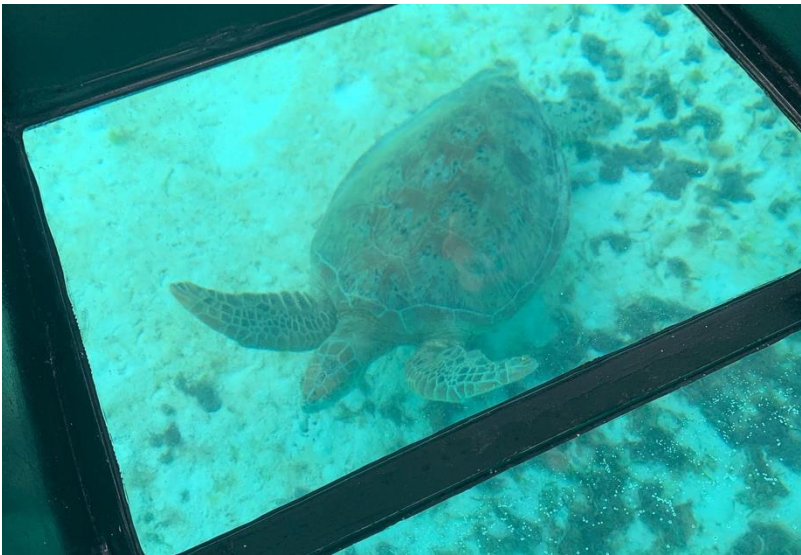
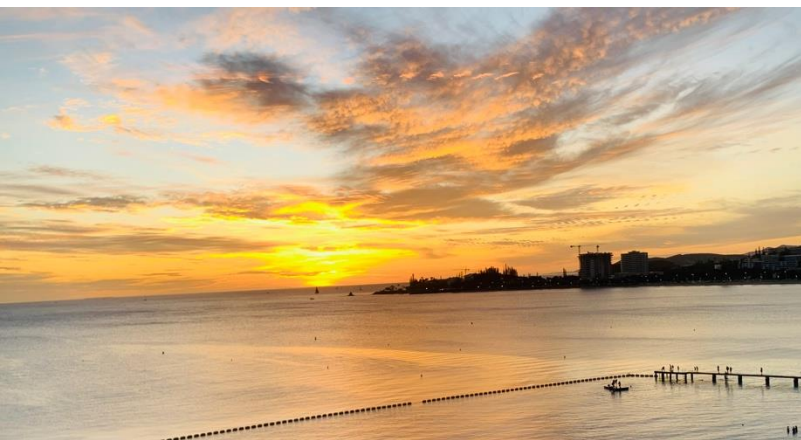
“I am totally recommending to everyone . New Caledonia is beautiful and the world needs to see it !” Juliana | Italk Travel

"New Caledonia is where vibrant Melanesian culture meets turquoise lagoons and French sophistication. It's not just a destination—it's a dreamscape waiting to be explored." Melissa
The Cruise & Travel Store

“Loved everything about where we stayed and visited”
Danielle | Flight Centre

“I will definitely recommend New Cal to my clients! A tropical paradise only a short flight from Australia with more then could ever imagine awaiting for you to experience”. Natalie | Ittravel









GLP HOTELS NEW CALEDONIA - Your Accommodation of Choice





NEW CALEDONIA

- Located in the heart of the Pacific, approximately 2000kms from Australia and New Zealand
- Surrounded by a 1600km coral reef, the 24,000 km² lagoon is listed as a World Heritage Site by Unesco
- Surface area of 18,575 km² - third largest island in the Pacific after Papua New Guinea and New Zealand
- Population of 270,000 inhabitants of diverse origins and cultures



HOW TO GET THERE

- Aircalin, the national carrier, operates direct flights to Australia (Brisbane and Sydney) in code share with Qantas (2-4 hours flight time) and flights to New Zealand (Auckland) in code share with Air New Zealand (3 hours flight time). Aircalin operates regional flights to Fiji, Vanuatu, Tahiti and Wallis
- Aircalin also operates direct flights to Paris via Bangkok as well as to Singapore in code share with Air France or Singapore Airlines for onward journeys to Paris.
- Tontouta International Airport is located 50kms from the capital city of Noumea.
- Air Caledonie (domestic airline) operates flights to the Loyalty Islands and Isle of Pines.



THE CAPITAL CITY

- Noumea is the capital of New Caledonia with 110,000 inhabitants. Originally named Port-de-France in 1854, the city was renamed Noumea in 1866.
- Modern and sophisticated infrastructure (transport, medical facilities, etc.)
- Home to a melting pot of different origins and cultures (Melanesian, Caledonian, European, Polynesian, Indonesian, Vietnamese etc)
- Often compared to the south of France due to the French culture, language and way of life




DOUBLETREE
by Hilton[®]
NOUMEA ILOT MAITRE RESORT



GLP HOTELS : DOUBLETREE BY HILTON NOUMEA ILOT MAITRE RESORT ***.. the perfect island getaway***

- Reopened in March 2021 following a complete renovation and rebrand to DoubleTree by Hilton
- Located 30 minutes by boat from Noumea (100-seater boat + 2 x 12-seater stabicraft)
- Surrounded by a 200-hectare marine reserve and the largest lagoon in the world
- Featuring the only overwater bungalows in New Caledonia and the first DoubleTree branded resort



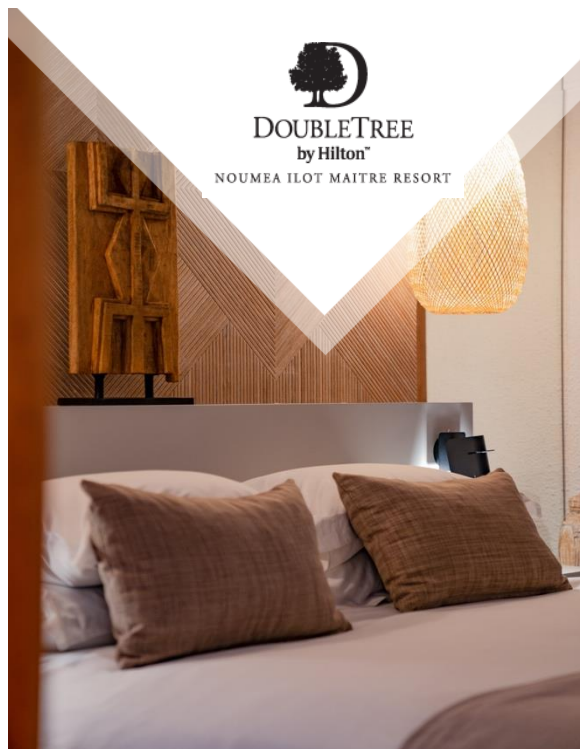
ACCOMMODATION

- Features 25 overwater bungalows – the only overwater bungalows in New Caledonia – with uninterrupted views over the lagoon and facing the sunset
- Spacious and contemporary (53m2) with separate lounge, bedroom and bathroom (bathtub and shower)
- Configuration : 1 king bed + 1 queen size sofa bed



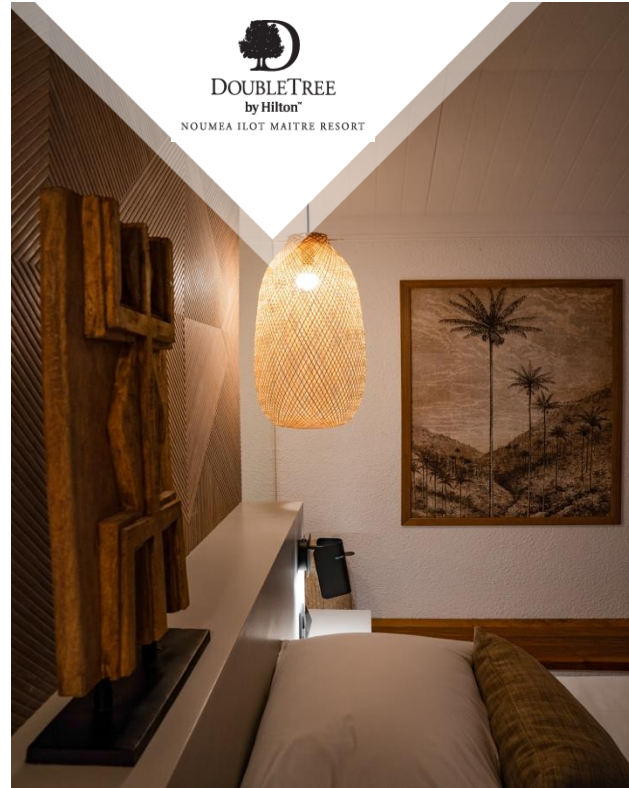
ACCOMMODATION

- Large exterior terrace (14m²) equipped with day bed facing the sunset
- Steps leading directly into the lagoon which can be lowered or raised
- Maximum capacity 2 adults + 2 children or 3 adults + 1 child



ACCOMMODATION

- 13 Beach Bungalows (36m2) located on the island overlooking the beachfront
- All bungalows have floor to ceiling windows leading out to a furnished patio (13m2) with table/chairs and sun loungers and separate bathroom with shower and bathtub.
-
- Maximum capacity 2 adults + 2 children or 3 adults + 1 child (1 king bed + 1 sofa bed)
- Family villa (one bedroom and two bedrooms) also available which can combine for a three-bedroom villa (maximum 8 adults + 2 children)



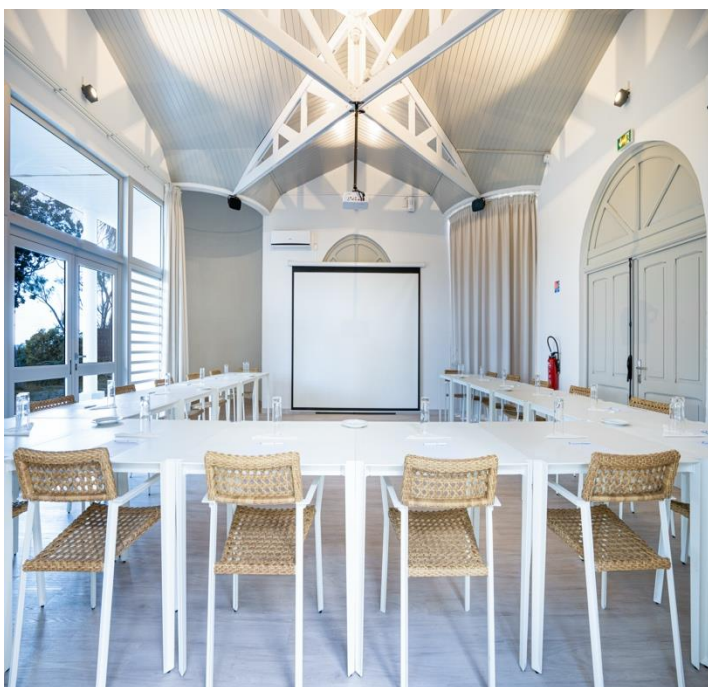
ACCOMMODATION

- 24 Garden Bungalows (36m²) located on the island nestled in the tropical gardens
- All bungalows have floor to ceiling windows leading out to a furnished patio (13m²) with table/chairs and sun loungers and separate bathroom with shower.
- Maximum capacity 2 adults + 2 children or 3 adults + 1 child (1 king bed + 1 sofa bed)
- Family villa (one bedroom and two bedroom) also available which can combine for a three-bedroom villa (maximum 8 adults + 2 children)



HOTEL SERVICES

- Restaurant L'Escapade located poolside for market fresh buffets
- Sunset Bar for cocktails; the perfect spot to watch the tropical sunsets
- Beach Café La Boussole for light lunch options
- Water activities centre with various equipment for hire to explore the lagoon
- Fitness Centre open 24 hours / Thai Massage Centre with optional beachside massages



SPECIAL EVENTS

- Le Colonnaire meeting room (56m²) with panoramic views over the lagoon and coffee breaks in the tropical gardens
- Cocktails on the deck of the Beach Café at sunset
- Wedding island located in the middle of the lagoon for a special celebration.
- Easy access to Noumea for an 'offshore' conference/meeting or cocktail




Hilton
NOUMEA LA PROMENADE
RESIDENCES



GLP HOTELS - HILTON NOUMEA LA PROMENADE RESIDENCES ***.. Your home away from home***

- Great location on Anse Vata Bay overlooking the lagoon
- Features 96 spacious fully equipped apartments : studio, 1, 2 and 3-bedroom apartments
- In proximity to numerous restaurants and boutiques and 10 minutes from the city center
- Ideally suited for families, groups and leisure clients on short or long stay travel



APARTMENT CATEGORIES

- ***STUDIO*** : Surface area of 41m² with 13m² furnished balcony (lit king)
 - Separate bathroom
 - Fully equipped kitchen and washing machine/dryer
 - King bed – capacity 2 guests
-
- ***ONE BEDROOM APARTMENT*** : Surface area of 65m² with 16m² furnished balcony
 - Separate bathroom
 - Fully equipped kitchen and washing machine/dryer
 - King bed or two single beds + sofa bed in the lounge – capacity 3 guests

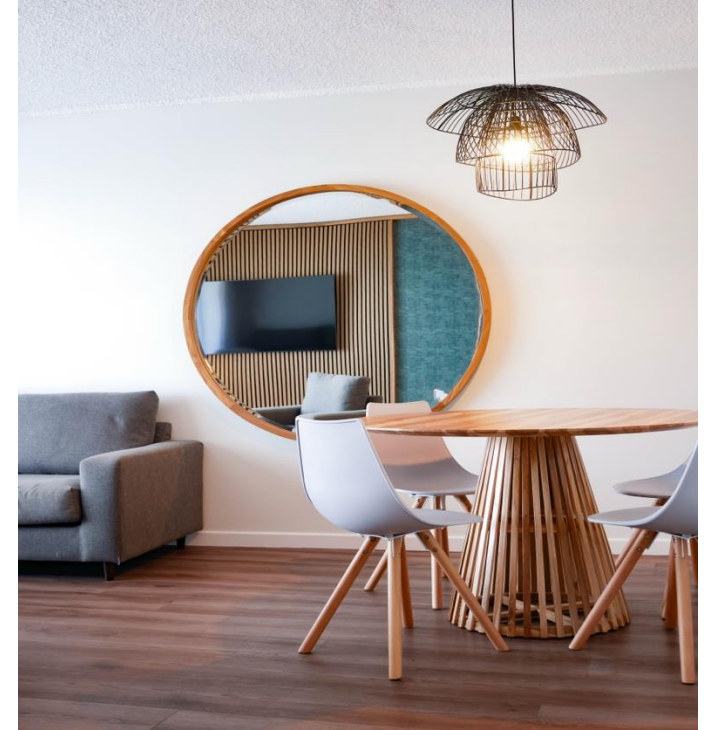


APARTMENT CATEGORIES

- **TWO BEDROOM APARTMENT** : Surface area of 95m² with 22m² furnished balcony (lit king)
- Two bathrooms
- Fully equipped kitchen and washing machine/dryer
- Two bedrooms – one with king bed and one with two single beds – capacity 4 guests

- **THREE BEDROOM APARTMENT** : Surface area of 110m² with 21m² furnished balcony
- Two bathrooms
- Fully equipped kitchen and washing machine/dryer
- Three bedrooms – two with king bed and one with two single beds – capacity 6 guests

- ** Accommodate rate is per apartment per night up to maximum capacity.



NEW IN 2025 : FULL RENOVATION OF ALL APARTMENTS

- All apartments will be fully renovated over a period of 3 years.
- Bathroom renovations : 90% des bathtubs will be replaced by walk in showers (the two-bedroom apartment is the only category that will have a bath and a shower)
- Kitchen/laundry renovation : replacement of all whiteware and kitchen surfaces
- Lounge : replacement of all furniture and soft furnishings, televisions and charging stations.



NEW IN 2025 : FULL RENOVATION OF ALL APARTMENTS

- Replacement of air-conditioning units with energy efficient units
- Replacement of four lifts which will be equipped with energy saving controls to put elevators on standby when not in use
- Two floors (12 apartments) will be closed for renovation every three months to avoid any disturbance to guests
- Replacement of balcony furniture to take full advantage of the panoramic view over the lagoon from each apartment



HOTEL SERVICES

- Restaurant La Terrasse open for breakfast and dinner
- Outdoor pool and sundeck
- 24-hour reception with baggage storage
- Complimentary undercover parking
- Wellbeing centre for women / fitness room for all guests



GLP HOTELS - NOUVATA HOTEL ***.. Great location at a reasonable price***

- Located on Anse Vata Bay overlooking the promenade and beach
- Features 330 accommodation units divided into 3 separate buildings
- In proximity to numerous restaurants and boutiques and 10 minutes from Noumea city center
- Ideally suited for business or leisure clients and groups (special interest, sporting, language)



STANDARD ROOMS

- Surface area of 25m² with pool or lagoon views (no balcony)
- Queen bed + single bed or 3 single beds (some interconnecting rooms available)
- Separate bathroom with shower, basin and toilet
- Kitchenette facilities (crockery/cutlery, microwave, fridge, sink)
- Capacity for 3 guests



COMFORT ROOMS

- Surface area of 32m² with balcony overlooking the pool or beach
- Queen bed + single bed or 3 single beds
- Separate bathroom with shower over bathtub and toilet
- Capacity for 2 guests per room



PREMIUM ROOMS

- Surface area of 48m² with 13m² furnished balcony
- Separate bathroom with shower over round bathtub + separate toilet
- Queen bed + single bed or 3 single beds
- Capacity for 4 guests per room (2 adults + 2 children or 3 adults + 1 child)



HOTEL SERVICES

- Restaurant l'Equilibre with 250 covers overlooking the lagoon or pool
- Code Bar overlooking the beach
- Outdoor pool and sundeck
- Largest conference facilities in Noumea
- 24-hour reception with baggage storage
- Complimentary parking

A man in blue shorts is carrying a woman in a red bikini on his shoulders. They are on a sandy beach with turquoise water and a lush green island in the background. The sky is blue with white clouds. A white rectangular box is overlaid on the image, containing the text "WHAT'S COMING UP?".

**WHAT'S
COMING UP?**

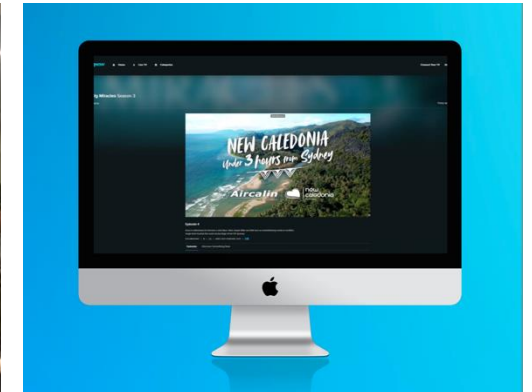
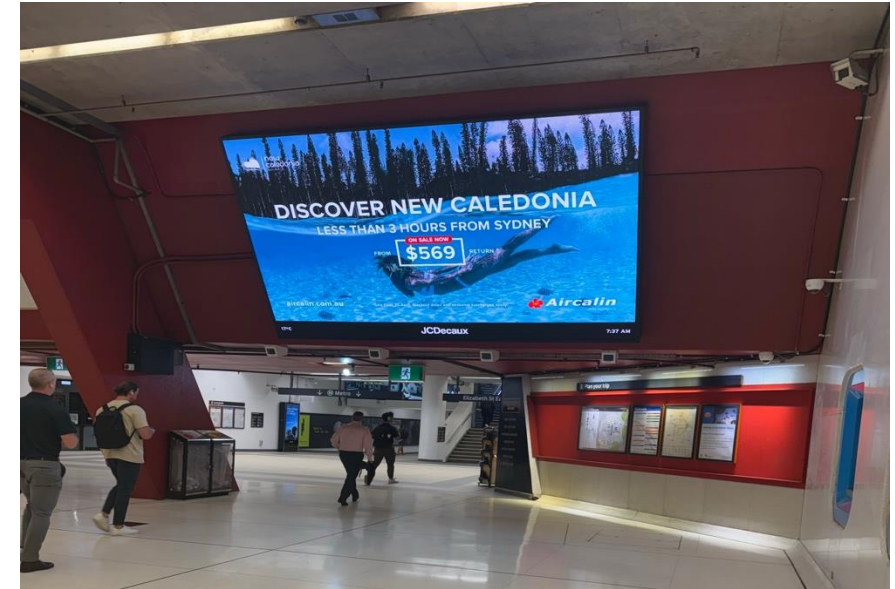
AUSTRALIA

AWARENESS CAMPAIGN PHASE 2 – JULY QLD & NSW

- META (Facebook, Instagram)
- Google Display Network & YouTube Pre-Roll
- Digital Catch-Up TV
- Out-Of-Home advertising

TREASURES OF THE SOUTH PACIFIC ROADSHOW

Brisbane/Melbourne/Adelaide: 18–20 AUGUST
Sydney/Newcastle: 2–3 SEPTEMBER





NEW ZEALAND

FOOD SHOW

AUCKLAND 24-27 JULY

AWARENESS CAMPAIGN PHASE 1 – JULY/AUGUST

- META (Facebook, Instagram)
- Google Display Network & YouTube Pre-Roll
- Digital Catch-Up TV
- Out-Of-Home advertising

TREASURES OF THE SOUTH PACIFIC ROADSHOW

AKL / WLG / CHC 15-16-17 SEPTEMBER

TRAVEL AGENTS FAMIL - SEPTEMBER



BECOME A 'NEW CALEDONIA SPECIALIST'

- ✓ Register at:
<https://trade.newcaledonia.travel/>
- ✓ Increase your knowledge with an
[e-learning program](#)
- ✓ Advance to the following certification
levels: Proficient > Advanced > Expert
- ✓ Win exclusive rewards: diploma,
sustainable gifts, educational tour and
self famil, listing on our B2C website...



TRAINING & WEBINARS AU/NZ


WEBINARS

A series of webinars specifically designed for travel agents. These online sessions will be hosted by NCT representative and will provide up-to-date and reassuring information directly from our industry partners.

Each session will feature presentations from local providers, who will share a positive update on their products and services, highlighting ongoing efforts to ensure safe, enriching, and memorable travel experiences.

ON DEMAND TRAINING SESSIONS





Welcome to the New Caledonia Trade website.

Helping you sell New Caledonia travel.

New Trade Website Q2 2025

This website is designed to help you increase your knowledge of the destination and ultimately help you give the best advice to your clients and make their dream holidays come true. You will find [inspiring itineraries ideas](#), a [toolkit section](#), a list of [wholesalers](#) that sell New Caledonia but more importantly you can become a 'New Cal Specialist' today with our [E-learning programme](#) and be a destination expert!



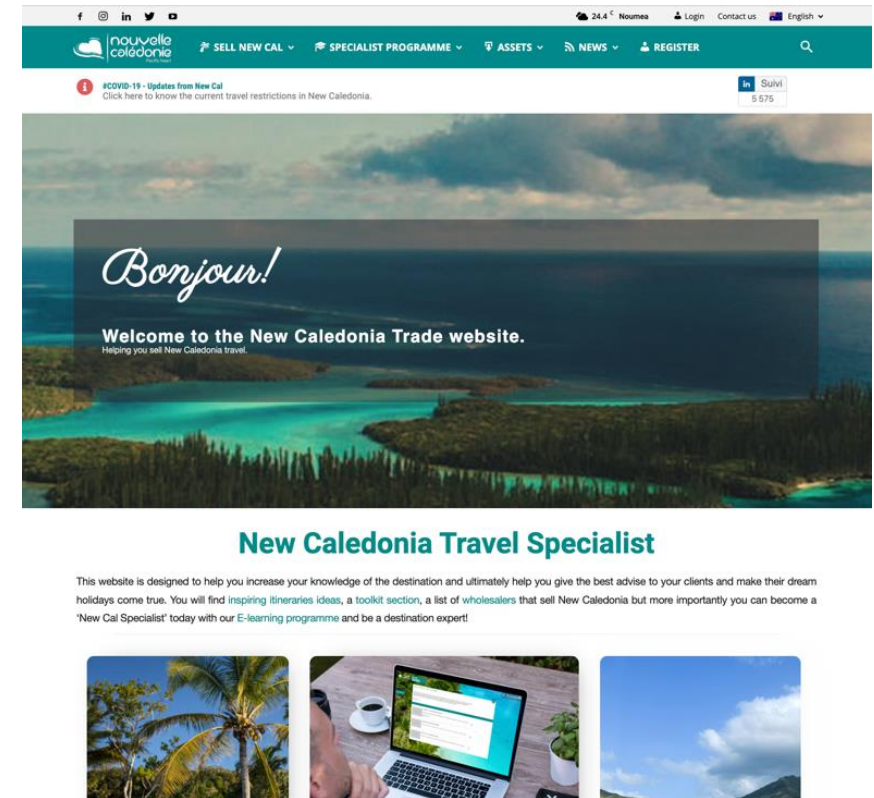
WORKING WITH NCT

- ✓ Find out more at:

AU - <https://au.newcaledonia.travel/>

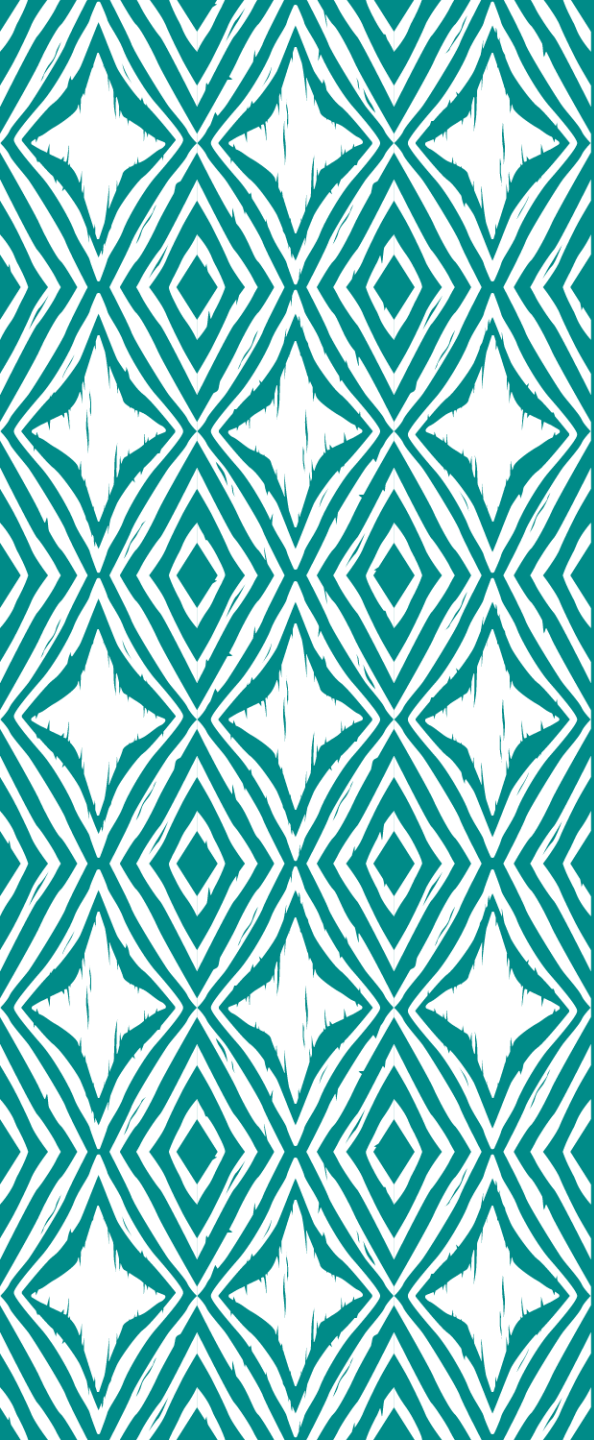
NZ - <https://nz.newcaledonia.travel/>

- ✓ Use our photo library: images.newcaledonia.travel
- ✓ View and request our videos:
<https://www.youtube.com/@NewCaledoniaEN>
- ✓ Get in touch with our pros and DMCs





Q&A



Pacific heart